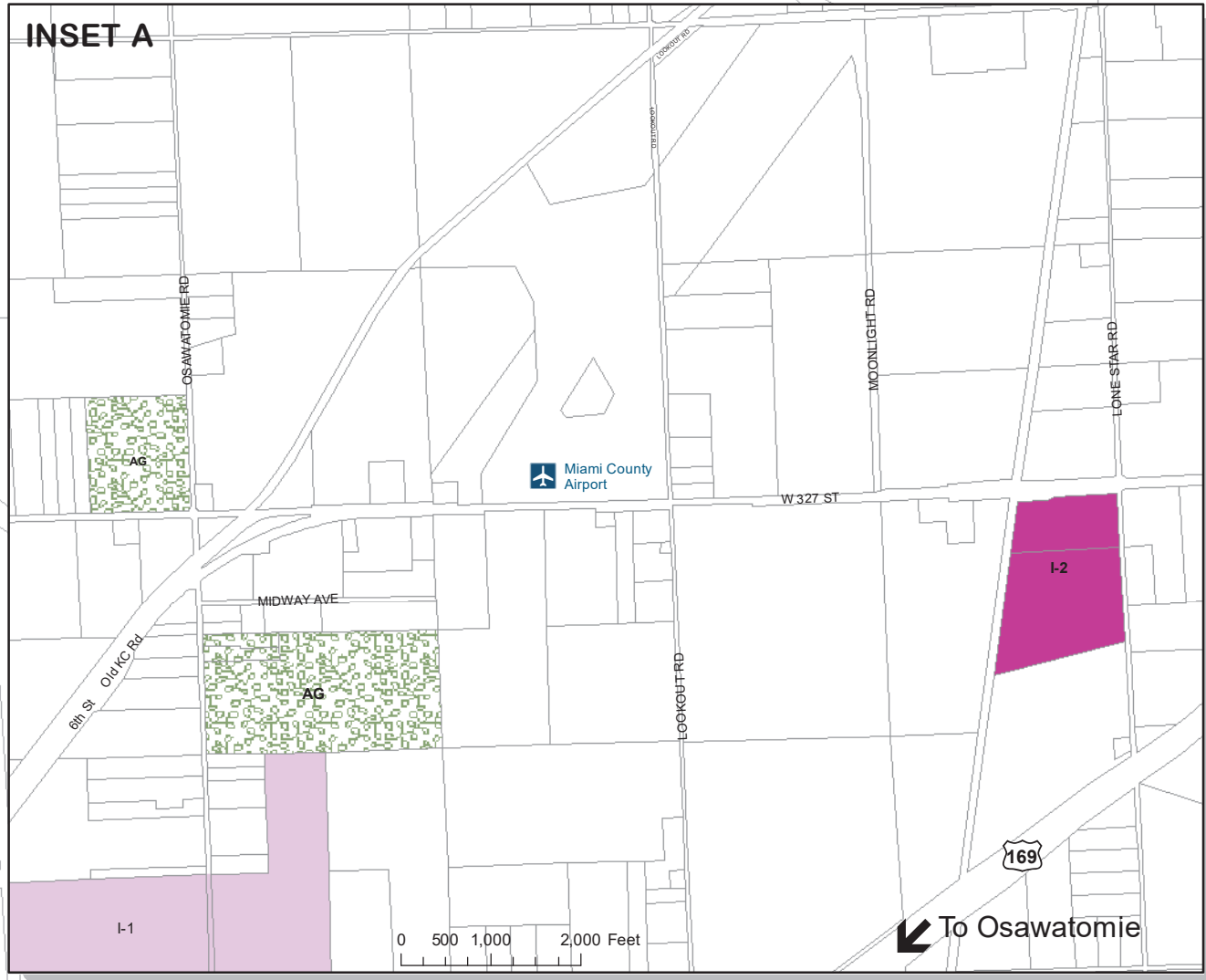
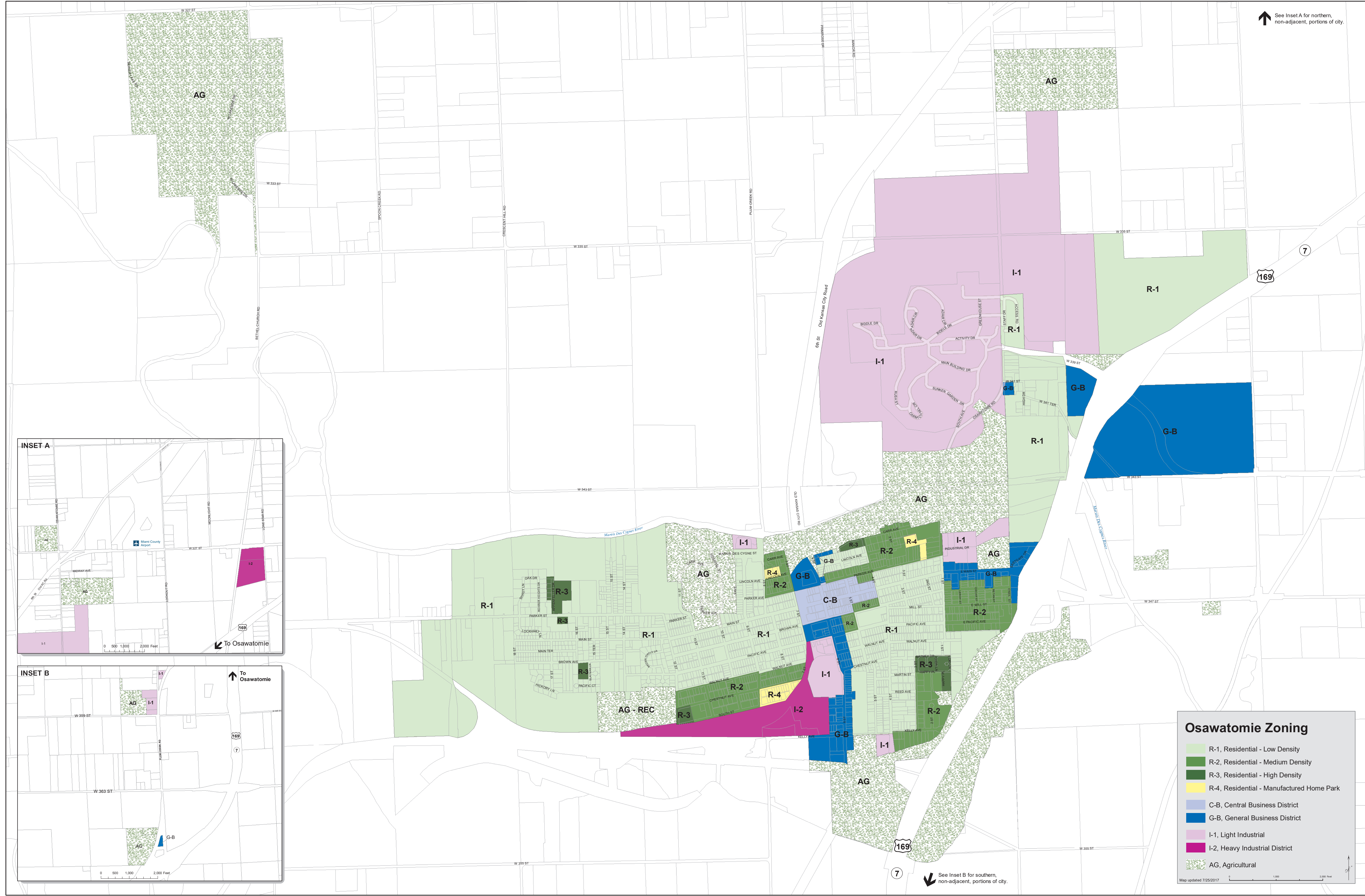


↑ See Inset A for northern, non-adjacent, portions of city.



### Osawatomi Zoning

- R-1, Residential - Low Density
- R-2, Residential - Medium Density
- R-3, Residential - High Density
- R-4, Residential - Manufactured Home Park
- C-B, Central Business District
- G-B, General Business District
- I-1, Light Industrial
- I-2, Heavy Industrial District
- AG, Agricultural

↓ See Inset B for southern, non-adjacent, portions of city.